

Making Containers Smart

Digitize your Supply Chain

www.rikutec.com
www.packwise.io



The digital twin of your container

Stay in touch with your product (even on the road), increase the service level for your customers and save valuable resources and costs



Fill level

High-precision level measurement



Location

Exact determination of location



Shock

Alarm for vibration and misalignment



Movement

Motion-controlled transmission intervals



Temperature

Determination of ambient temperature

Your advantages at a glance

- **Optimal supply of your customer**

Automatic reordering, production planning on demand, pay-per-consumption, consignment stock, avoidance of bottlenecks

- **Efficient processes in logistics**

Overview of containers ready for collection -> route optimisation, increased number of container cycles per year, improved container management

- **More security**

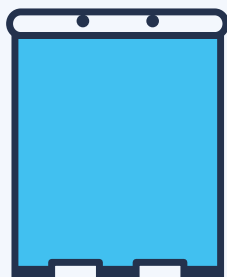
Temperature and damage control, complete traceability, theft protection

- **Reduction of the administrative burden**

Less communication effort through transparency, automation and call-to-actions

Useable on various types of containers

designed to fit - built to last



RIKUTEC Container



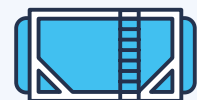
Plastic-IBC



Stainless Steel IBC



Stationary Tank



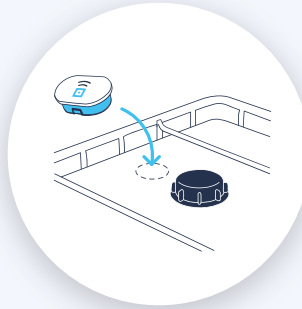
Tank Container

Packwise Smart Cap

Ready for immediate use on liquid containers



Pull off protective foil.



Put on the Smart Cap.



That's it!

Packwise Flow

Your intuitive, browser-based Software digitally visualizes the condition of your containers



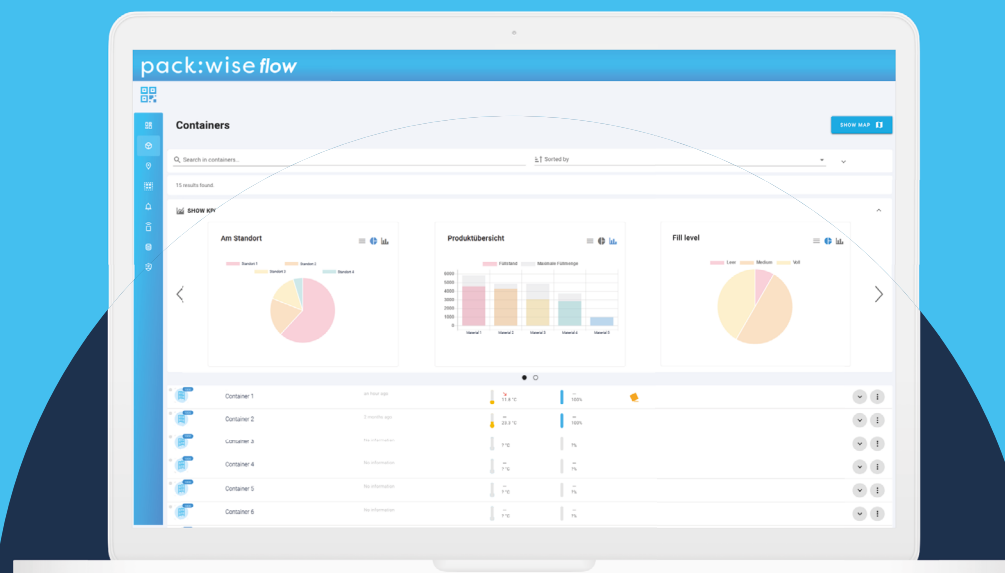
Highly intelligent container management including the automation of follow-up processes



Share selected data to collaborate even better with your customers and partners



Customizable dashboard to always have an overview of your most important KPIs



Benefit from the new possibilities of the Industrial Internet of Things (IIoT)

developed and manufactured in Germany

Sensor technology

Groundbreaking sensor technology for high-precision and contactless level measurement

Fill level, position, temperature and motion

Location determination

GPS, WIFI, BLE, Cell-tower triangulation

Data transmission

NB-IoT, LTE Cat M1, GSM, WLAN, BLE

Energy efficiency

Ultra-low-power processors, high-performance battery concept

IP protection class

IP 66/68

We look forward to hearing from you!



Andreas Amberg

President

RIKUTEC America, Inc.

a.amberg@rikutec.com

+1 774 243 2275

Contact us

sales@rikutec.com
+1 508 234 7300

info@packwise.io
+49 (0) 351 896 750 90

Rikutec America Inc.
371 Douglas Rd, Whitinsville MA 01588

Packwise GmbH
Antonstraße 25, D-01097 Dresden

 [rikutec-america-inc.](https://www.linkedin.com/company/rikutec-america-inc)

 [packwise-gmbh](https://www.linkedin.com/company/packwise-gmbh)