



When safety and purity are a must

Product & Accessories Guide 2023

ABOUT RIKUTEC

The RIKUTEC Group is an innovative and internationally orientated group of companies in blow-molding technology. With 30+ years' experience in the blow-molding industry, RIKUTEC has grown into leading company within the plastic industry and different market segments.

We are a specialist in COEX-Accumulator Head Technology, for construction of containers with 2–5-layer walls.

All of our containers are manufactured in clean-room conditions with high-purity HDPE at our manufacturing plant in Altenkirchen, Germany, with North American sales, warehousing and technical support at our Whitinsville, MA office.

If you have any questions regarding our products or would like more information, please contact us at the contact information below. Thank you for your interest in RIKUTEC America for your container, chemical and dispensing needs.



RIKUTEC America

Contact

RIKUTEC AMERICA
RIKUTEC Group
371 Douglas Road
Whitinsville, MA 01588
Phone: (508) 234-7300
Fax: (508) 234-7337
info@rikutec.com
www.rikutec.com



RIKUTEC Germany



RIKUTEC Blow-Molding Machine

RIKUTEC POLY IBC

Introduction

RIKUTEC Poly-IBCs are high-quality multiway IBCs that are capable for handling high-purity liquids for the semiconductor, chemical, pharmaceutical and food industries. Each IBC utilizes our patented multi-layer blow molding technology with 100% high-purity HDPE for all around protection against outside influences and trace materials.

UC 2.0 1000



UC-S 2.0 1000



CD 2.0 1000

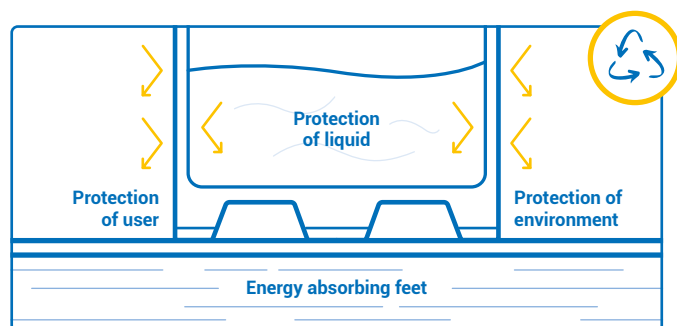


GR 1000



TECHNICAL SPECIFICATIONS

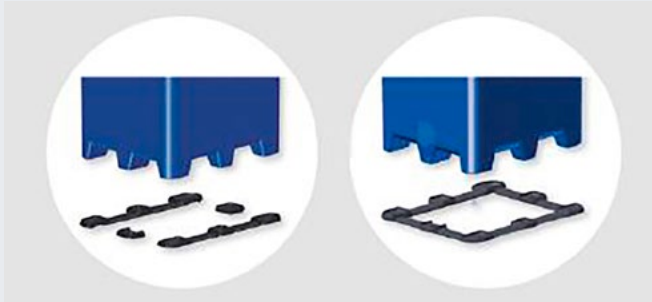
	UC 2.0 1000	UC-S 2.0 1000	CD 2.0 1000	GR-1000
Usage	High-Purity Chemicals (PG II, III)	Nitric Acid	High – Purity Flammable (PG II,III)	High-Purity Chemicals (PG II, III)
Materials – Outer Box	3 layer HDPE	3 layer HDPE	3 layer HDPE, Carbon Added	3 layer HDPE
Materials - Cover	2 layer HDPE	2 layer HDPE	2 layer HDPE, Carbon Added	2 layer HDPE
Materials – Inner Bottle	1 layer HDPE - Out 1 layer High Purity HDPE - In	1 layer HDPE - Out 1 layer High Purity HDPE - In	1 layer HDPE, Carbon Added - Out 1 layer High Purity HDPE - In	1 layer HDPE - Out 1 layer High Purity HDPE - In
Dimensions	1000 mm X 1200 mm X 1175 ± 2% mm (39.4 in X 47.2 in X 46.3 ± 2% in)	1000 mm X 1200 mm X 1175 ± 2% mm (39.4 in X 47.2 in X 46.3 ± 2% in)	1000 mm X 1200 mm X 1175 ± 2% mm (39.4 in X 47.2 in X 46.3 ± 2% in)	1000 mm X 1200 mm X 1175 ± 2% mm (39.4 in X 47.2 in X 46.3 ± 2% in)
Nominal Capacity	1000 L (264 gal)	1000 L (264 gal)	1000 L (264 gal)	1000 L (264 gal)
Overflow Capacity	1050 L (277 gal)	1050 L (277 gal)	1050 L (277 gal)	1050 L (277 gal)
Tare Weight	95 kg (209 lb)	95 kg (209 lb)	95 kg (209 lb)	95 kg (209 lb)
Bungs	3 X S62X5 (mod. 2" Buttress)	3 X S62X5 (mod. 2" Buttress)	3 X S62X5 (mod. 2" Buttress)	1 X S56X4 1 X DN 150 mm
Dip Tubes	Quick Connect, Entegris	Quick Connect, Entegris	Quick Connect	Quick Connect, Trisure CDS
Bottom Valve	N/A	N/A	N/A	1 X 2" Ball Valve (optional)
Stacking Height	1+2 Empty 1+1 Full, max. 1841 kg (4050 lb)	1+2 Empty 1+1 Full, max. 1841 kg (4050 lb)	Not Stackable	1+2 Empty 1+1 Full, max. 1841 kg (4050 lb)
Transport Quantity	60 Per Truck 44 Per Container	60 Per Truck 44 Per Container	60 Per Truck 44 Per Container	60 Per Truck 44 Per Container
UN Specification	31HH1/Y/****/D/BAM 6808- RIKU-TEC/3314/2070	31HH1/Y/****/D/BAM 6808- RIKU-TEC/3314/2070	31HH1/Y/****/D/BAM 6435- RIKUTEC/0/2070	31HH1/Y/****/D/BAM 6968- RIKU-TEC/3314/2050
DOT Specification	31HH1/Y/****/USA/+AA11220/0/2010	31HH1/Y/****/USA/+AA11220/0/2010	N/A	N/A



ACCESSORIES

Pallet Frames

- Constructed from HDPE (with carbon added for CD-1000)
- “Euro” (left) and “Frame” (right) styles available
- Interchangeable



Cover

- Protection of Bungs and IBC against the elements
- Fits onto any RIKUTEC Poly IBC



Conductive Totes

- Inner layer high purity HDPE and outer layer with carbon black to eliminate uncontrolled static discharge
- Constructed with similar high-purity HDPE, but with carbon-black added for flammable liquids
- Drums and IBCs approved for Packing Group II chemicals (Y)
- IBCs approved for combustible chemicals (FP > 100°F (37.8°C)), Drums approved for flammable chemicals (FP < 100°F (37.8°C))
- Electrically conductive up to 1 MΩ
- Conductive IBC includes optional conductive banderole around inner bottle for extra protection
- Accessories come in conductive versions



RIKUTEC DRUMS

Introduction

RIKUTEC Drums are high-quality multiway drums that are capable of handling high-purity liquids for the semiconductor, chemical, pharmaceutical and food industries. Each drums utilizes our patented multi-layer blow molding technology with 100% high-purity HDPE for all around protection against outside influences and trace materials.

All UC-Drums utilize 2 layers of protection, except for the Twin Drum, which utilizes 3 layers of protection. Our drums are capable of withstanding at least 300 kPa internal pressure, except for the CD-Drum(150Kpa). Furthermore, the UC-Drum and the Twin Drum have been tested and approved for the X Packing Group of hazardous materials (Packing Group I), with the Twin Drum being utilized for dual containment.

UC-Drum



UC-Heavy Drum



CD-Drum

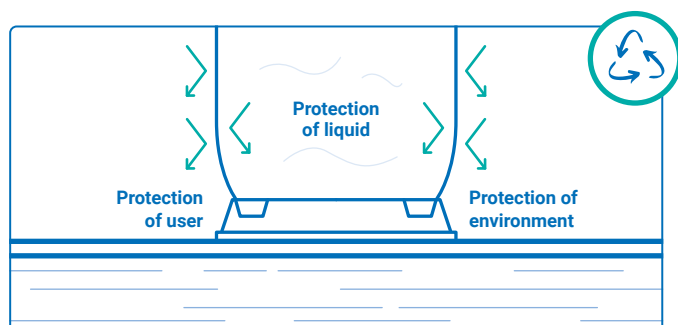


Twin Drum



TECHNICAL SPECIFICATIONS

	UC-Drum	UC-Heavy Drum	CD-Drum	Twin Drum
Usage	High-Purity Chemicals	Ammonia-Based Solutions	High – Purity Flammable	Nitric Acid and Packing Group I
Materials – Drum	1 layer HDPE - Out 1 layer high purity HDPE - In	1 layer HDPE - Out 1 layer high purity HDPE - In	1 layer HDPE, Carbon Added - Out 1 layer HDPE - In	1 layer HDPE - Out 1 layer high purity HDPE - In
Materials – Inner Bottle	N/N	N/A	N/A	1 layer HDPE – Out 1 layer High Purity HDPE – In
Dimensions	581 mm X 955 mm (22.9 in X 37.6 in)	581 mm X 955 mm (22.9 in X 37.6 in)	581 mm X 955 mm (22.9 in X 37.6 in)	585 mm X 963 mm (23 in X 37.9 in)
Nominal Capacity	200 L (53 gal)	200 L (53 gal)	200 L (53 gal)	200 L (53 gal)
Max. Pressure	300 kPa (43.5 psi)	300 kPa (43.5 psi)	150 kPa (21.8 psi)	320 kPa (46.4 psi)
Tare Weight	14.5 kg (32 lb)	16 kg (35.3 lb)	16 kg (35.3 lb)	16 kg (35.3 lb)
Bungs	2 X S62X5 (mod. 2" Buttress)	2 X S62X5 (mod. 2" Buttress)	2 X S62X5 (mod. 2" Buttress)	2 X S62X5 (mod. 2" Buttress)
Dip Tubes	Quick Connect, Entegris	Quick Connect, Entegris	Quick Connect	Quick Connect, Entegris
Stacking Height	Max. 3 Pallets Empty Max. 2 Pallets Full	Max. 3 Pallets Empty Max. 2 Pallets Full	Max. 3 Pallets Empty Max. 2 Pallets Full	Max. 3 Pallets Empty Max. 2 Pallets Full
Transport Quantity	176 Per Truck (8 per Pallet) 208 Per Container	176 Per Truck (8 per Pallet) 208 Per Container	176 Per Truck (8 per Pallet). 208 Per Container	176 Per Truck (8 per Pallet). 200 Per Container
Packing Groups	I (1.2 SG), II, III	II, III	II, III	I (SG 1.9), II, III
UN Specification – X Approval	1H1/X1.2/300/**/D/ BAM 6834-RIKUTEC	N/A	N/A	6HH1/X1.9/320/**/D/ BAM 14926-RIKUTEC
UN Specification – Y Approval	1H1/Y1.9/300/**/D/ BAM 6834-RIKUTEC	1H1/Y1.2/300/**/D/ BAM 6834-RIKUTEC	1H1/Y/150/**/D/BAM 7369-RIKUTEC	6HH1/X1.9/320/**/D/ BAM 14926-RIKUTEC
DOT Specification	N/A	N/A	N/A	6HH1/X1.9/320/**/ USA/AA9938



RIKUTEC ACCESSORIES

QUICK CONNECT SYSTEM

The RIKUTE Quick Connect System is the preferred way to properly extract and fill containers without external contamination or hazards. The RIKUTEC dip tube used in combination with the RIKUTEC dispense or recirculation head, will safely and effectively dispense or fill liquids into any container.

Benefits of the RIKUTEC Quick Connect System:

- Dip tubes are sized for any container for maximum dispensing
- made from high purity Polypropylene or Polyethylene, with Conductive versions available
- Key-Coded to prevent accidental mixing and contamination
- Used for a wide variety of chemicals

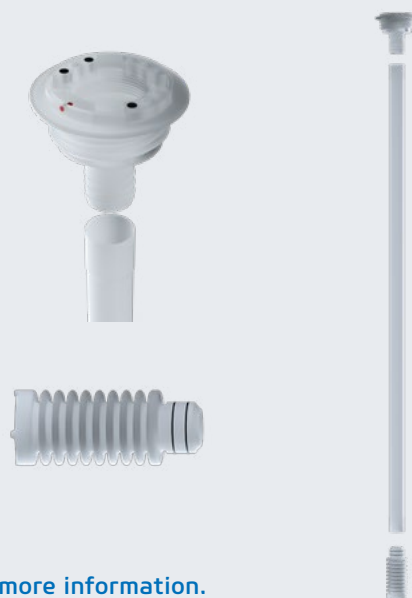
The combination of the dispense or recirculation head and the dip tube will allow the most preferred method of dispensing and filling.



RIKUTEC QUICK CONNECT SYSTEM ACCESSORIES

Dip Tubes

- Suitable for any container
- Made from high purity PP / PE, conductive and nonconductive
- One-way or multiple use enabled
- Suitable for high purity, most corrosive and flammable chemicals
- Built-in coding system avoids cross-contamination
- Clean-room molded and machined. Accessories ultrasonically welded together
- Can be ordered coded for a specific chemical, or uncoded for your own chemicals



We specialize in custom order Dip Tubes for your needs. Please contact us for more information.

Description	Options
Dip Tube Type	DT = RIKUTEC Quick Connect System II, DT3 = RIKUTEC Quick Connect System III
Connection of Thread	S56, S62, S64, S70, G2, NPT Pipe thread. More threading available upon request
Material Dip Tube	PP, PE, PVDF, CD
Gasket Seal	POE, PE
Dip Tube Length	0 – 1200 mm (0 mm - Recirculation) Container specific, based on customer measurements
Coding	001 – 084 (020 Recirculation) XXX = Without Code
Closing Seals	Closed: S = 3/4", T = 42 x 2, Vented: V = 3/4", W = 42 x 2
Options	F = Bottom Bellow, Contact Ring, Grounding Cable (Conductive IBCs)
Example of Order	DT-62PE-001-1040-SF. (Dip Tube for Nitric Acid)

RIKUTEC QUICK CONNECT SYSTEM TURNKEY SYSTEM SOLUTIONS

UC 2.0 1000



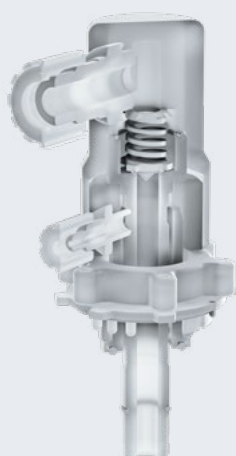
RIKUTEC QUICK CONNECT SYSTEM ACCESSORIES

RIKUTEC Quick Connect System Dispense and Recirculation Heads

- Made from high purity PE / PVDF, conductive and nonconductive
- Dispense or recirculation capable
- Suitable for high purity, most corrosive and flammable chemicals
- Built-in coding system avoids cross-contamination
- Clean-room molded and machined. Accessories ultrasonically welded together
- Can be ordered coded for a specific chemical, or uncoded for your own chemicals

Specifications

Description	Options
Dispense Head Type	DH (RIKUTEC Quick Connect System II), DH3 (RIKUTEC Quick Connect System III)
Function	D – Dispense R – Recirculation A - Turncock
Material Dispense Head	PE, PVDF, CD
Gasket	Kalrez, Viton, EPDM
Coding	001 – 084 020 = Recirculation XXX = Without Code
Connector Fluid	Flare (1/2" – 1") = FX Tube Plug (1/2" – 1") = X NPT (1/2" – 1") = NPTX R-Thread (1/2") = RX
Connector Gas	Flare (1/4" – 1/2") = FX Plugged (P)
Example of Order	DH-DK-PE-002-F1/2-F1/4 (DH for Sulfuric Acid (<70%))



We specialize in custom order Dispense Heads for your needs. Please contact us for more information.

RIKUTEC QUICK CONNECT SYSTEM ACCESSORIES

Quick Connect Code Checker

- Allows for checking dip tube code without cross contamination
- Holes allow to easily code blank dip tubes

Specifications

Dimensions	70 mm X 60 mm
Material	HDPE
Coding	001-084 (020 Recirculation)



Universal Wrench

- Designed to install / remove dip tubes and closures
- Designed for use with Torque Wrench

Specifications

Wrench Width	19 mm
Material	PE, POM, PVDF
Torques	DT & Bungs: 30 + 5 Nm Closures: 7 Nm

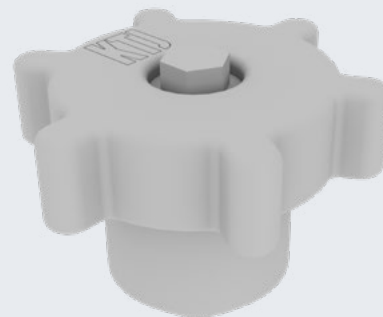


Compact Wrench

- Used only for closing of closures, not for bung closing or dip tube installation
- Designed for use with Torque Wrench

Specifications

Wrench Width	13 mm
Material	PE, POM, PVDF
Torques	Closures: 7 Nm



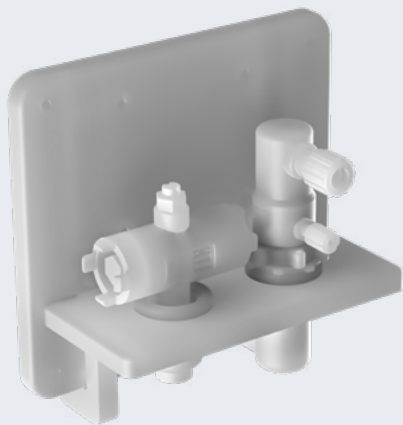
RIKUTEC QUICK CONNECT SYSTEM ACCESSORIES

Docking Station

- Used to store equipment for QC System, including dispense heads, wrenches, tamper proof caps, code checker and tongs
- Available in 2 – 4 piece stations
- Easily removable for easier access to container

Specifications

Standard Dimensions	250 mm X 110 mm
Width per Receptacle	2: 230 mm 3+: add 100 mm
Weight	Between 2 and 6 kg
Material	PE, other options available



Tamper-Proof Caps

- Keeps the closure of the dip tube in place during transit
- Uses red and blue seals for transport to and from destination
- Caps specifically made for Quick Connect System and Entegris Dip Tubes

Specifications

Standard Dimensions	80 mm X 20 mm
---------------------	---------------



Tongs

- Keeps dip tube in container while removing the dip tube closure
- Made from PVC and made to fit around dip tube

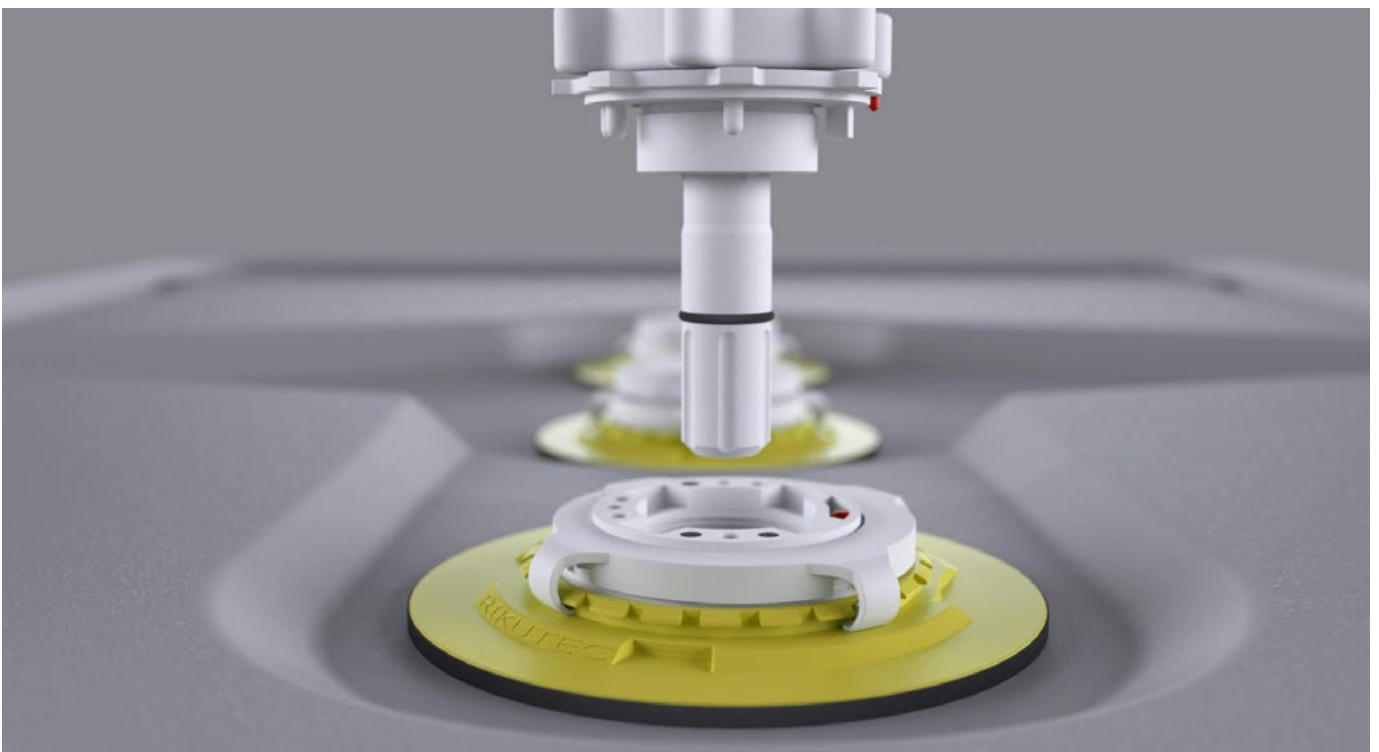
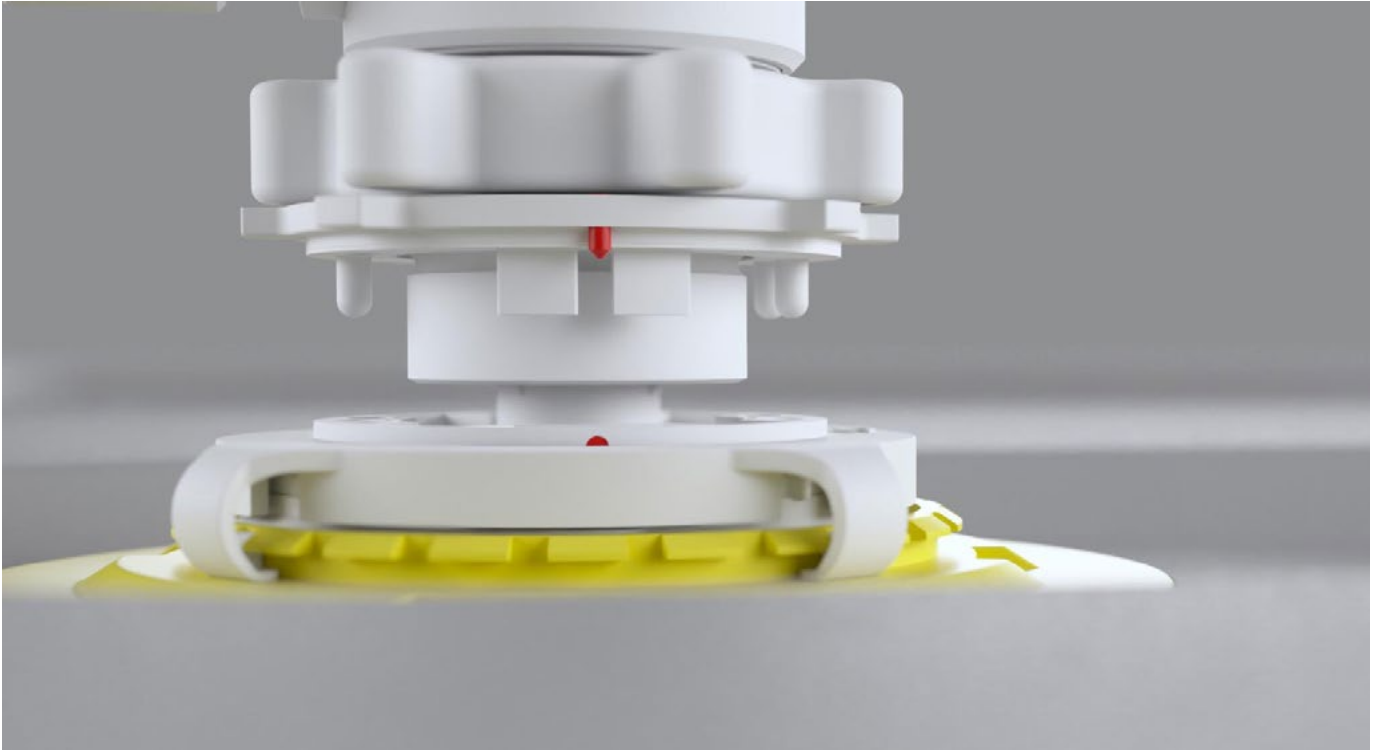
Specifications

Material	PVC
Colors	White, Gray



RIKUTEC QUICK CONNECT SYSTEM

Trust in our expertise with 25 years of experience in the production of Quick Connect Systems for high-purity applications in collaboration with our longstanding partner





Contact for more information

RIKUTEC AMERICA

RIKUTEC Group
371 Douglas Road
Whitinsville, MA 01588
Phone: (508) 234-7300
Fax: (508) 234-7337
info@rikutec.com
www.rikutec.com